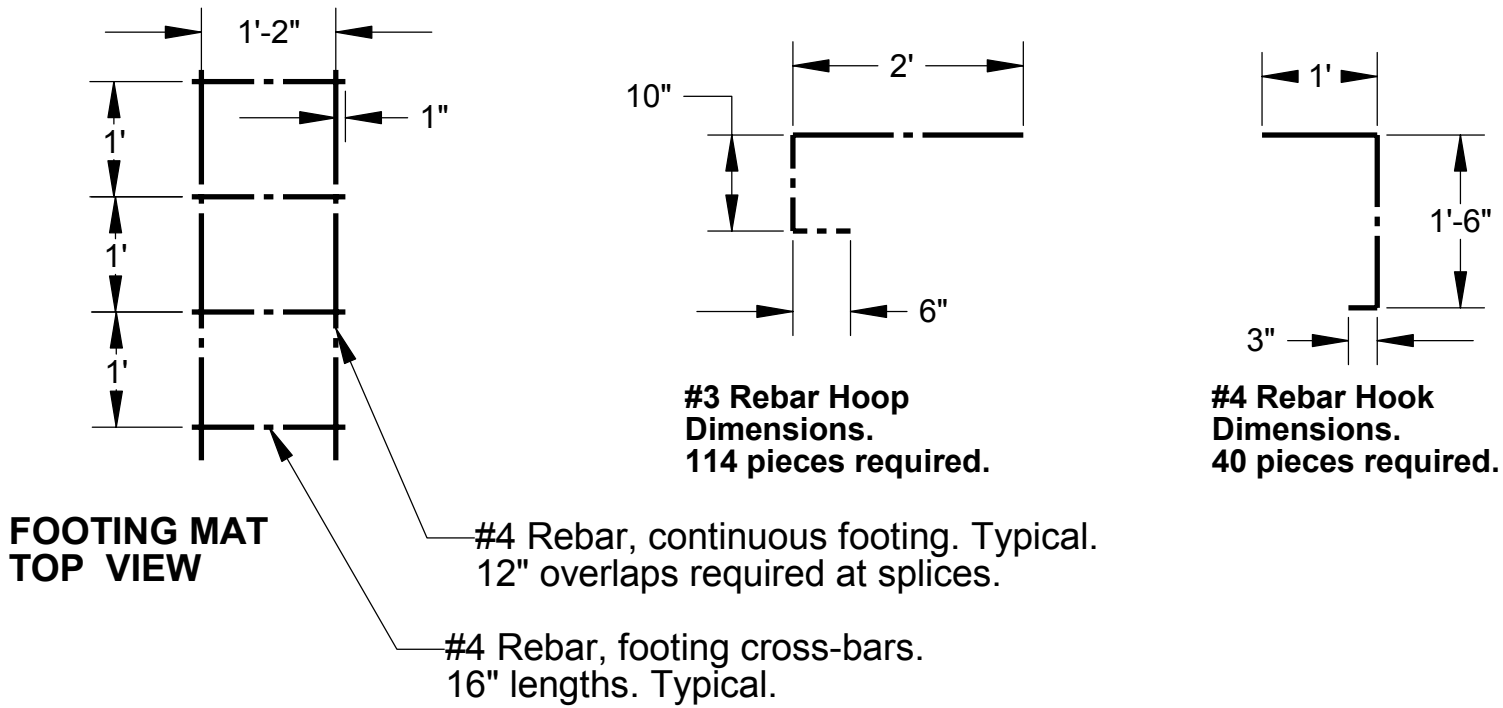


Material List

| Item | Discription | Quantity | Comments |
|------|--|------------------|-------------------------------------|
| 1 | Floor Slab Concrete. 3,000 psi Compressive Streng. | 9 cubic yards | Fiberglass reinforcing recommended. |
| 2 | Footing Concrete. 3,000 psi Compressive Streng. | 7 cubic yards | Fiberglass reinforcing recommended. |
| 3 | Pier Concrete. 3,000 psi Compressive Streng. | .5 cubic yards | Fiberglass reinforcing recommended. |
| 4 | #4 Steel Rebar continuous footing f/ ends. | Eight pieces 13' | Includes 12" laps. |
| 5 | #4 Steel Rebar continuous footing f/ sides. | Eight pieces 16' | Includes 12" laps. |
| 6 | #4 Steel Rebar cross-bar footing f/ mats. | 114 pieces 16' | |
| 7 | #3 Steel Rebar Hoops. | 114 pieces 16' | |
| 8 | #4 Steel Rebar Hooks. | 40 pieces 16' | |
| 9 | 1.5" Concrete Dobies with wire ties. | 100 | |
| 10 | Rebar Tie-Wire | 2 rolls | Or, 1000 quick ties. |
| 11 | Concrete curing compond. | 5 gallons | Spray on after concrete cures. |



Side View Rebar Detail identical to End View Rebar Detail except with 29' 8" rebar lengths.

